



**Electronica HiTech Engineering Pvt. Ltd.** was established in Pune in July 2007 to cater to the Quality Sheet Metal Component requirements in industry.

After a year of job shop operations with two machines in a basic shed, we understood the precise Market need of a **'One Stop Solutions Provider for Sheet Metal Components'**.

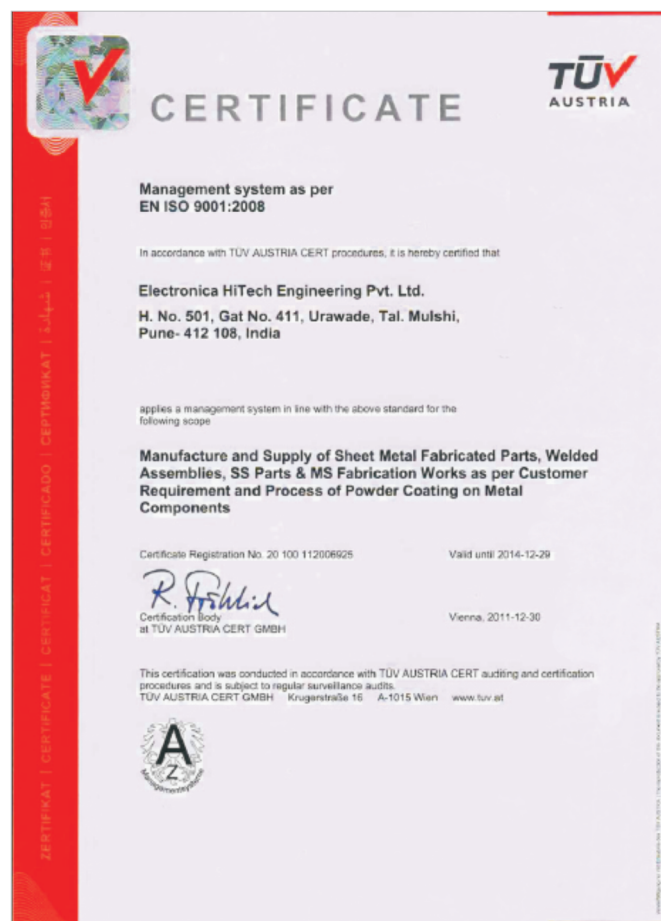
We upgraded our capabilities accordingly by adding a Powder Coating Plant in 2009, increasing our shopfloor to 1200 Sq. mt. in 2010 and introducing the Servo Electric Bending Technology in 2013.

Today, we supply Sheet Metal Canopies, Panels, Base Frames, Pressure Tested Fuel Tanks, Engine and Fan Guards Cabinets and several other components to some of the leading multinationals and manufacturing enterprises.

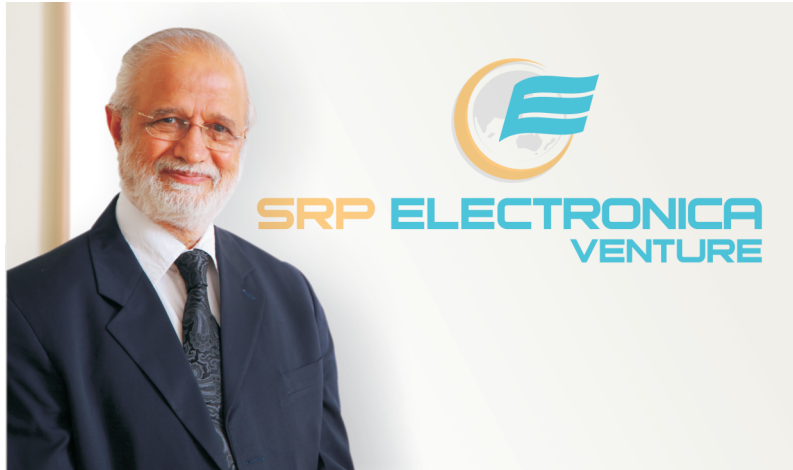
Our average growth rate of 50-60% in the past 5 years with an RM processing plant capacity of **3000 Tons / Annum** stands testimony to our competence and capabilities.

#### Our Strengths :

- **Our Team:** 100 employees including Managers, Engineers and Operators
- **Our Customers:** Leading MNCs like Atlas Copco, Cummins, Godrej etc.
- **Our Suppliers:** Tata Steel, Essar Steel, Reliance Gas, etc.
- **Process Controls:** ISO Certification in 2011 & INFOR ERP in 2012
- **Infrastructure:**  
Industrial Plot - 7600 Sq.mt.  
Manufacturing Shed - 2800 Sq.mt.  
Office Space - 500 Sq.mt.



## The Visionaries



**S. R. Pophale** Chairman

At Electronica HiTech Engineering Pvt. Ltd. we have invested in a state-of-the-art CNC sheet metal fabrication facility and a modern powder coating facility. We have the finest mother machines for laser cutting, CNC Turret Punch Press and CNC Bending Machines.

Through these facilities our focus is to ensure quality, lower costs and deliver assured value to our customers. In the past five years our operations have rapidly grown with our highly trained and qualified staff.



**Rahul Kaskhediker** Managing Director

Since inception in April 2007, Electronica HiTech Engineering Pvt. Ltd. has been growing in business at a healthy rate of 40-50% each year. With a modest beginning of 2 machines, a 5000 sq. ft. shed and a 12-employee Team, we are now a one-stop solutions providing facility for Sheet Metal Fabrication with a shop floor area of 32000 sq. ft. and a dedicated team of 90 employees. As far as business growth is concerned, we seek to increase our business with our esteemed MNC customers and continue to create newer markets to add to our Customer portfolio.

We plan to emphasise on the manufacturing of the best-in-class Stainless Steel components for use in clean room, Hospital and Hospitality applications as well as mild steel components for Control Panels, Cabinets, Server Racks and Elevator Claddings.

**With our vision "To be the most trusted choice of global enterprises for quality sheet metal products in India,"** we plan to create a new facility in Shirval on the Pune-Satara highway dedicated to the manufacturing of Stainless Steel components. For this facility where we intend to invest in the finest machines with a high level of automation, to facilitate us to add more products in our product basket and focus on export market.

# The 😊 of Confidence

Our state-of-the-art facilities showcase the finest in industrial tools and equipment.

CNC Turret Punching Machine from Prima Power, Finland, capable to punch up to 8mm Mild Steel and 4mm Stainless Steel



CNC Laser Cutting Machine from Prima Industrie, Italy, capable of Cutting 20mm Mild Steel, 10mm Stainless Steel and 8mm Aluminum

A Servo-Electric Press Brake for High Precision Jobs with Repeatability and Speed

A Press Brake with Sheet Follower to avoid Operator fatigue and dependency in heavy and sizable Jobs



Guillotine Shearing Machine from Yawei, capable of shearing up to a length of 4m





Special Table Top Type CNC Spot Welding M/c from Koyo Giken, Japan, a one-man operation

General machines for allied sheet metal operations that include Tapping, Drilling, Grinding, TIG & MIG Welding m/c for MS, SS, Al etc.



An Automated Powder Coating Plant with 12 Tank Henkel Chembond line for Surface Treatment is the latest addition to the above Facility to cater to the ever increasing requirement of One-Stop Solutions for Sheet Metal Components with Powder Coating. Powder coating is carried out using Mitsuba Guns with a complete Quality Testing Laboratory to ensure the highest quality standards.



In addition to fulfilling all the norms and securing all the statutory permissions from the Pollution Control Board and all other authorities, the Powder Coating Baking oven is LPG fired for ensuring a complete pollution free environment. For treatment of effluents, we have in regular operation a dedicated E.T.P Plant.



For appropriate Material Handling we have installed an Abus, Germany, Hoist & EOT cranes, a Godrej 3.0 Ton Forklift Truck and Stackers and Hand Pallets from Crown, Germany.

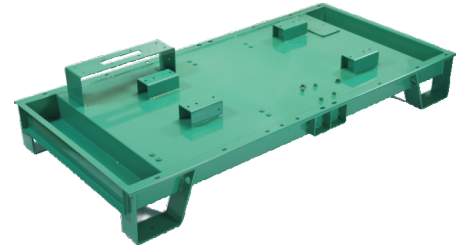
# The ☺ of Diversity



Electrical Cabinet



Assembled Canopy



Base Frame



Canopy Panels



Canopy Door with Baffles



Fan Guard



Canopy Panels



Assembled Canopy



Kitchen Setup



Elevator Cladding

We began with the manufacturing of Powder Coated MS components.

With our high quality and delivery standards we soon established a strong market presence, following which we acquired the necessary capabilities and began supplying canopies, base frames and guards / vending machine parts to our MNC customers, mostly for export. We believe in investing in quality infrastructure without compromise on the finest of Machines and Tooling equipment to deliver world class products.

We have always believed that as the nation prospers, greater would be the focus on both, durability and aesthetics. With this we see bigger markets for Stainless Steel Products. Looking forward to this, we currently are putting up a separate production line dedicated to Stainless Steel Components.

Considering the care required in Stainless Steel components production, we would maximize the use automation wherever possible and applicable.



# The 😊 of Commitment

When the mind is healthy, the body performs best. The health of an organization depends directly on the 'spirit of its people'. For achieving this we focus on healthy HR practices which greatly emphasise on training and skills development. We encourage our employees to follow the concept of 'working hard and smart' and thereby optimizing their efforts to maximize their output value. We recognize the importance of the work-life balance which enables our people to deliver maximum output for any given task. We are constantly upgrading our standards in HR practices across the world.

With our commitment to our training initiatives & HR practices we hope to return to society at least a little of what we have taken by inspiring a good spirit of citizenship within our people through our core values based on Integrity and Discipline.



## On-The-Spot Recognition Scheme

  
**Well Done!**

  
**Keep it up!**

  
**Excellent!**

  
**You Deserve It!**

  
**You Can Do It!**

**What is On-The-Spot Recognition?**

It is an essential part of good management and can be easily implemented into everyday occasions.

Those types of smaller and continuous recognition moments are:

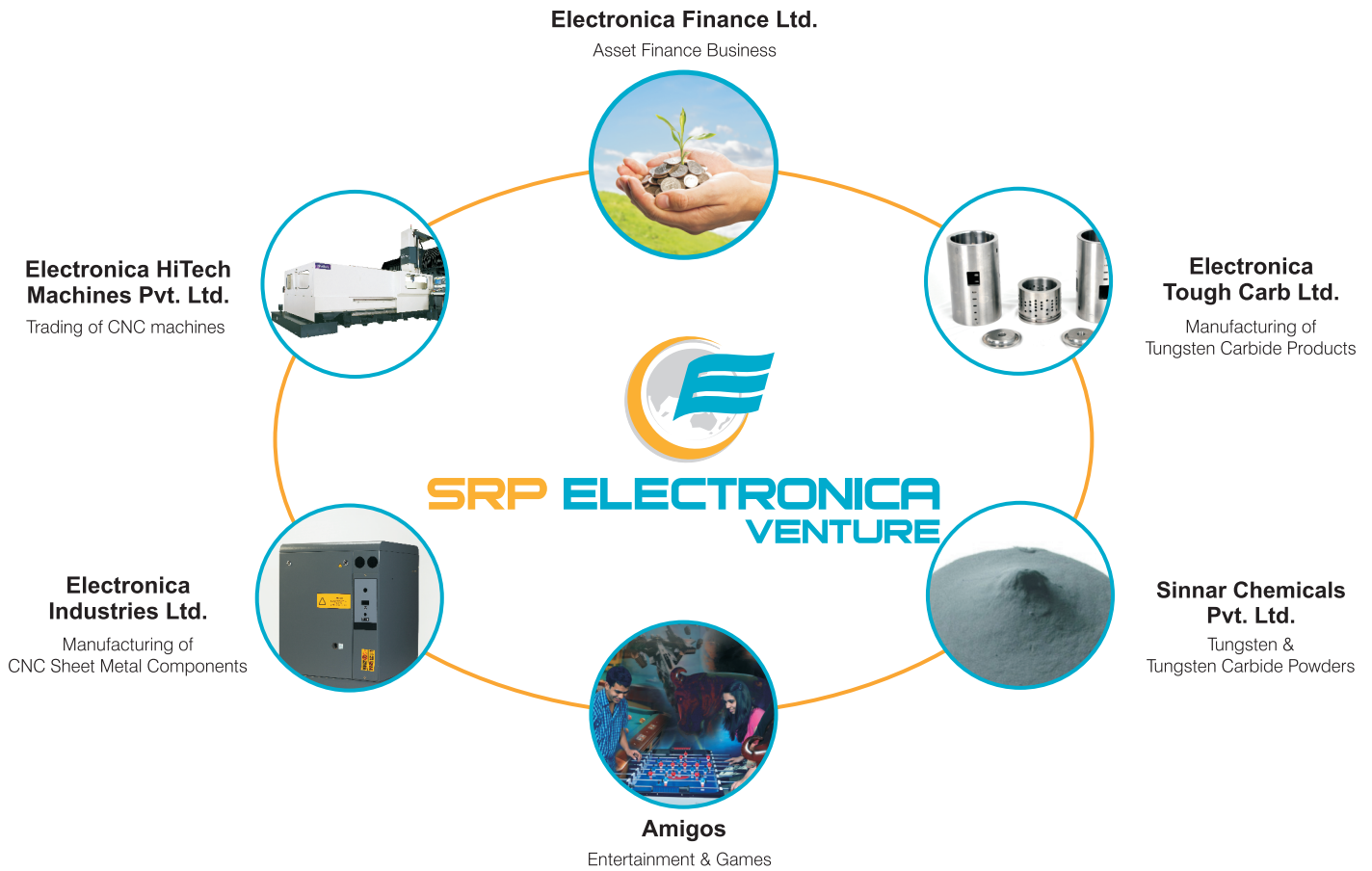
- Increase job satisfaction
- Create pride and foster loyalty
- Acknowledge employees for their efforts and contributions

**Why Recognition?**

On-The-Spot Recognition is flexible and can be applied when an employee or team goes above and beyond the call of duty by working late, coming up with innovative ideas and giving



# Business Spectrum



## Electronica HiTech Engineering Pvt. Ltd.

H. No. 501 Gat No. 411, Urawade Tal. Mulshi, Dist Pune 412108 India  
Tel. : +91 20 6790 1000 [www.electronicaindustries.com](http://www.electronicaindustries.com)

